

STATE OF OKLAHOMA
DEPARTMENT OF TRANSPORTATION

PLAN OF PROPOSED
COUNTY BRIDGE
FEDERAL PROJECT NO. STP-219D(056)CI
BRIDGE AND APPROACH PLANS FOR
CREEK COUNTY
STATE JOB NO. 29407(04)
BRIDGE "A" LOCATION 19N3650E0830002
LATITUDE N35°48'42" LONGITUDE W96°30'43"
EXISTING NBI NO. 01058; NEW NBI NO. 31864

DESCRIPTION	REVISIONS	DATE

SURVEY CONTROL DATA

HORIZONTAL DATUM:
OKLAHOMA NORTH ZONE (3501) NAD 83.
BEARINGS ARE BASED ON STATE PLANE
GRID, AND ARE NOT ASTRONOMIC.
VERTICAL DATUM:
NAVD 1988
NO SCALE FACTOR

INDEX OF SHEETS

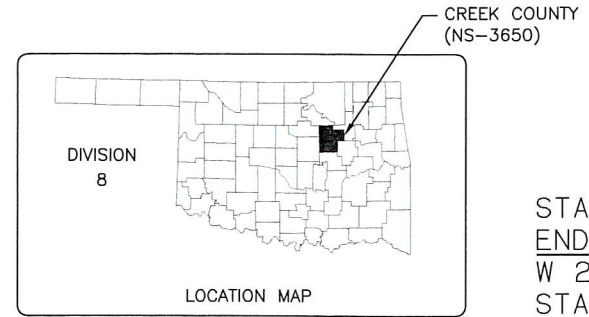
0001	TITLE SHEET
0002	TYPICAL SECTIONS
AB01	SUMMARY OF PAY QUANTITIES & NOTES (BRIDGE)
AR01	SUMMARY OF PAY QUANTITIES & NOTES (ROADWAY)
AX01	SUMMARY SHEET
B001	GENERAL PLAN & ELEVATION
B002	SUBSTRUCTURE STAKING DIAGRAM
B003-B004	DETAILS OF PIER
B005-B009	BORING LOGS
R001	STORMWATER MANAGEMENT PLAN
R002	SECTION 404 PERMIT COMPLIANCE
R003-R005	ALIGNMENT DATA
R006-R009	EROSION CONTROL
R0010-R017	PLAN AND PROFILE SHEETS
R018-R019	RETAINING WALL DETAILS
X001-X026	CROSS SECTIONS

THE FOLLOWING ODOT STANDARD
DRAWINGS ARE REQUIRED

BRIDGE	ROADWAY	TRAFFIC	TRAFFIC MAINT.
CB26-I-SK0-ABUT-PC3-01E	SSS-1-1	DU1-1-00	GET-2-00
CB26-I-SK0-XSECT-PC234-01E	TSC2-3-2	DU2-1-00	GRH1-1-00
CB26-I-SK0-LSECT-PCB-01E	TSD-2-0	GMS1-1-00	GRH2-1-00
CB26-I-SK0-DKSLB-BLIST-PCB-01E	PSE-1-0	PM3-1-02	GRH3-1-00
CB26-I-SK0-PCB-III-65-01E	PUD-3-2	RSD1-1-00	
CB26-I-SK0-PCB-III-85-01E	RDI-3-1	SBS2-1-00	
CB26-I-SK0-DIA-ABUT-PC3-01E	CET4S-3-2	SSA1-1-00	
CB26-I-SK0-DIA-INTPR-PCB-01E	PCES-4-1	SSP1-1-02	
CB26-I-SK0-BRG-PC3-01E	GPI-4-0	TCS1-1-01	
CB26-I-SK0-SPR-QUAN-PCB-1-01E	SPI-4-1	TCS2-1-00	
CB26-I-SK0-SPR-QUAN-PCB-2-01E	SPB-1-4	TCS4-1-01	
CB26-I-SK0-AS-01E		TCS5-1-00	
CB26..32-I-SK0-WING-PC3-01E		TCS7-1-02	
CB26..32-I-SK0-ABUT-MISC-01E		TCS9-1-01	
CB26..32-C..I-SK0..30-PCB-DTL-1-01E		TCS14-1-00	
CB26..32-C..I-SK0..30-PCB-DTL-2-01E		TCS15-1-00	
CB26..32-C..I-SK0..30-GRAU-BC-00E			
HP1-2-01E			
TR3-2-01E			

DESIGN DATA

NS3650	
AADT 2016	= 100
AADT 2036	= 181
V	= 35 MPH
FLEX ESAL	= 0.2 M



SCALES

PLAN	1" = 20'
PROFILE HOR.	1" = 20'
VER.	1" = 5'
LAYOUT MAP	1" = 5,280'

STA. 104+48.43
END INCIDENTAL CONSTR.
W 241ST ST S
STATE JOB NO. 29407(04)

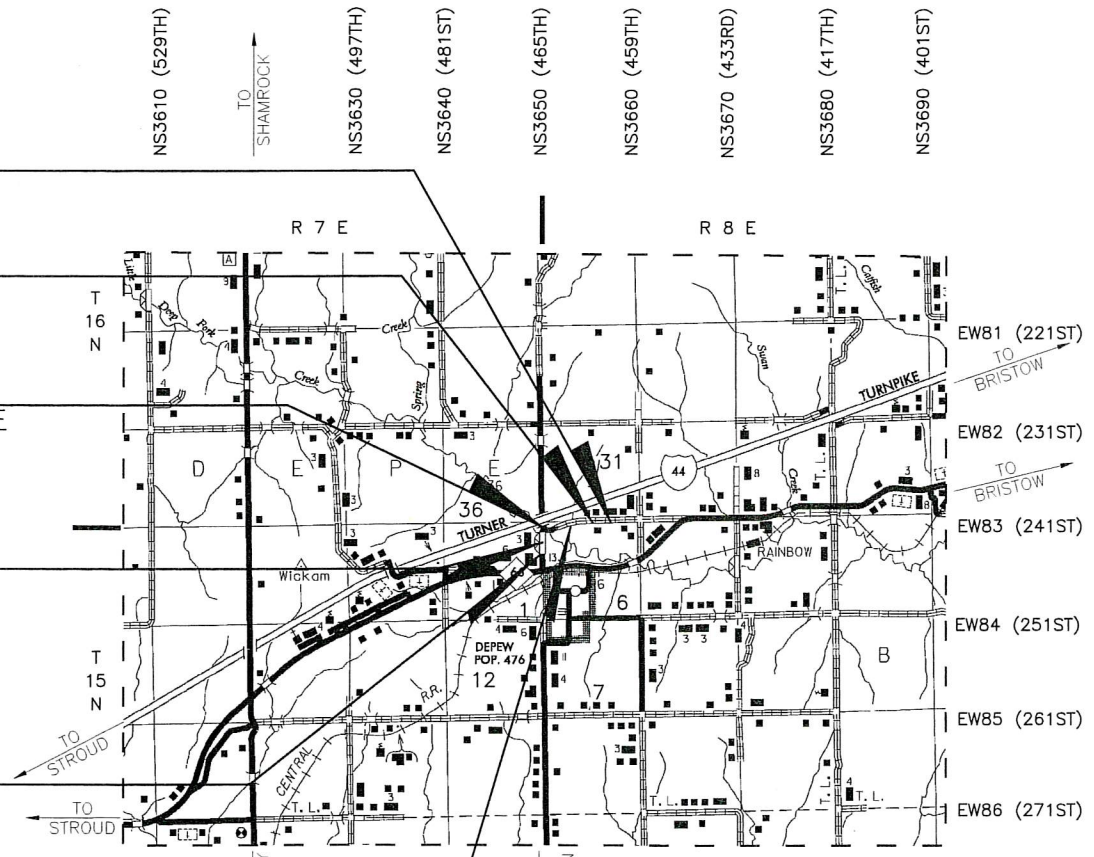
STA. 103+50.00
END CONSTR. W 241ST ST S
STATE JOB NO. 29407(04)

STA. 67+50.00
END PROJECT S 465TH W AVE
STATE JOB NO. 29407(04)

BRIDGE "A"
BEGIN STA. 61+48.59
END STA. 63+00.09
LENGTH = 151'-6"

STA. 39+67.69
BEGIN PROJECT S 465TH W AVE
STATE JOB NO. 29407(04)

STA. 100+12.09
BEGIN CONSTR. W 241ST ST S
STATE JOB NO. 29407(04)

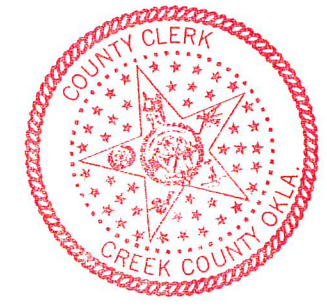


ROADWAY LENGTH (S 465TH W AVE)	2630.81 FT.	0.498 MI.
ROADWAY LENGTH (W 241ST ST S)	337.91 FT.	0.063 MI.
BRIDGE LENGTH	151.50 FT.	0.028 MI.
PROJECT LENGTH		0.589 MI.

EQUATIONS : NONE
EXCEPTIONS : NONE

APPROVED
THIS 31 DAY OF July 2017
BOARD OF COUNTY COMMISSIONERS
CREEK COUNTY, OKLAHOMA

CHAIRMAN
MEMBER
MEMBER
ATTEST: COUNTY CLERK



SUBMITTED BY
GUY ENGINEERING
Certificate of Authorization No. 1427
Renewal Date: June 30, 2018
7-31-17
John R. Worman
JOHN R. WORMAN, P.E. NO. 15497
(THIS SEAL COVERS ALL SHEETS EXCEPT B003-B004)

OKLAHOMA DEPARTMENT OF TRANSPORTATION	DEPARTMENT OF TRANSPORTATION FEDERAL HIGHWAY ADMINISTRATION
DATE APPROVED	DATE APPROVED
BY	BY
CHIEF ENGINEER	DIVISION ADMINISTRATOR
PROJECT NO. STP-219D(056)CI	SHEET NO. 0001

SHANNON SHEFFERT / JAMES PRUETT P.E. NO. 29417(01) LOCAL GOVERNMENT DIVISION

2009 OKLAHOMA STANDARD SPECIFICATIONS FOR HIGHWAY CONSTRUCTION - ENGLISH GOVERN, APPROVED BY THE U.S. DEPARTMENT OF TRANSPORTATION, FEDERAL HIGHWAY ADMINISTRATION, JANUARY 4, 2010.